

at a glance: DEIA in DC Arts Education

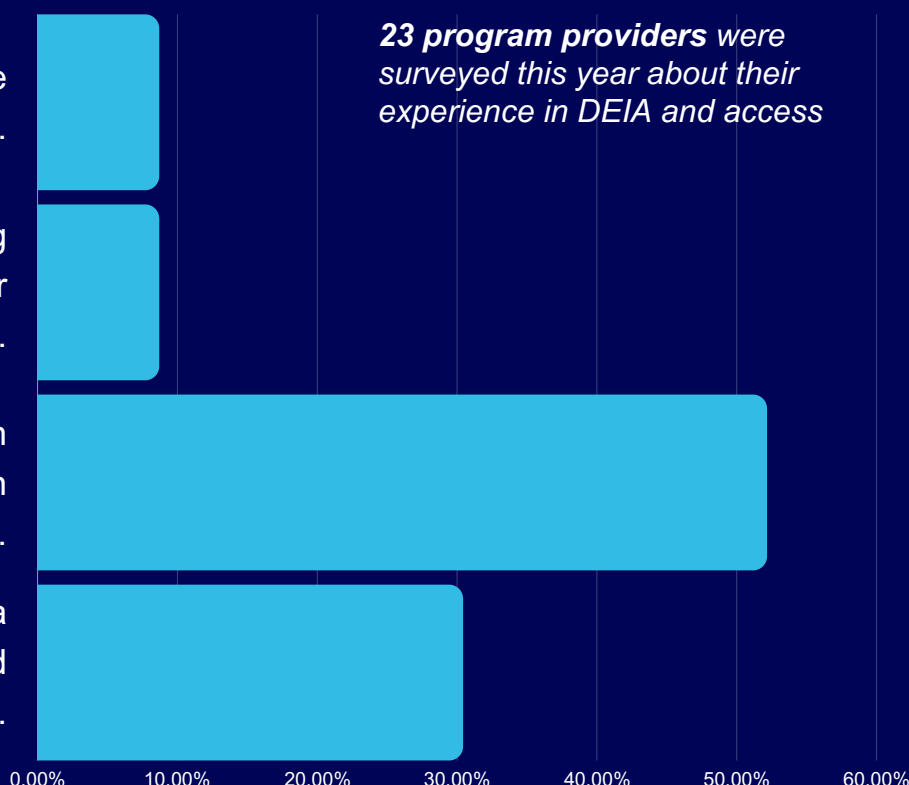
WHERE ARE WE WITH IMPLEMENTATION?

1) My organization/ practice does not center DEIA at all.

2) My organization/ practice is discussing DEIA, but it is not yet reflected in our work environment and programs.

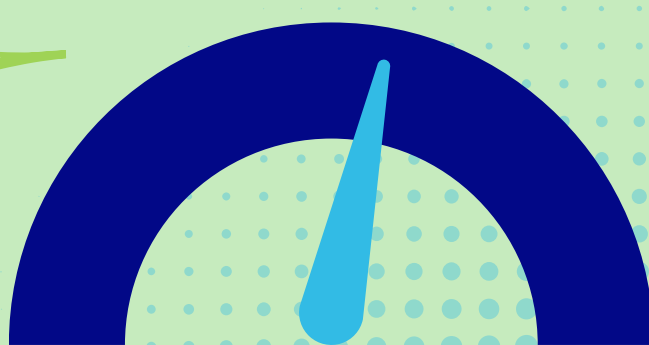
3) My organization/ practice is in transition towards centering DEIA in our programs and work environment.

4) My organization/ practice is a leader in DEIA standards for arts and humanities education.

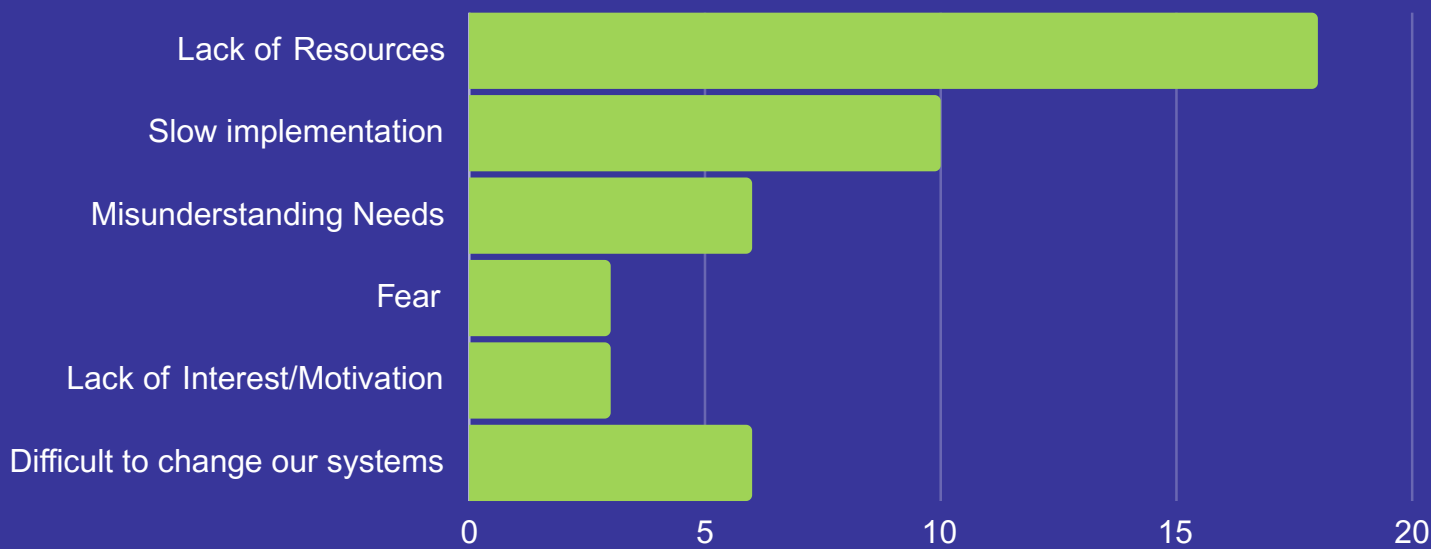


DEIA implementation is a priority, but also a weakness.

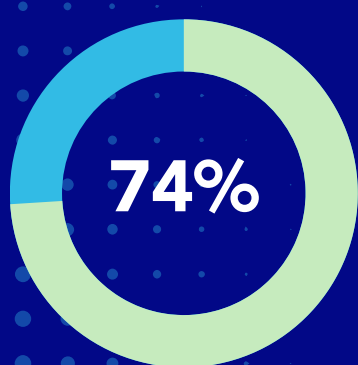
56% of survey participants had no measurement for success in DEIA implementation.



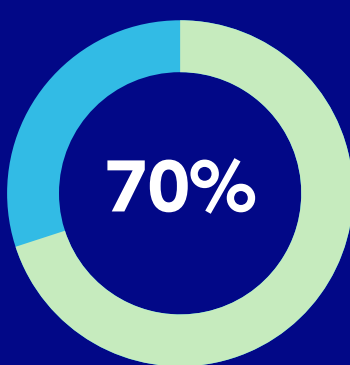
WHAT ARE BARRIERS TO IMPLEMENTATION?



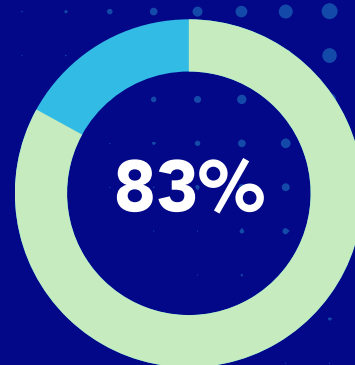
ORGANIZATIONS + COMMUNITY IMPACT



inspire a sense of pride in their community



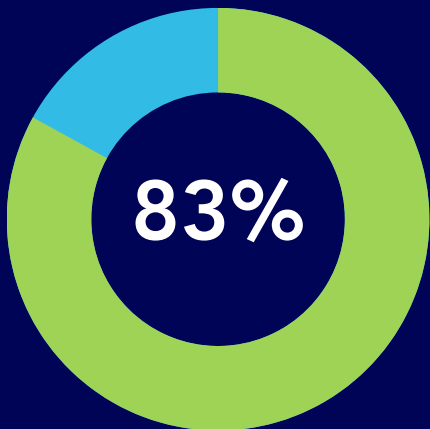
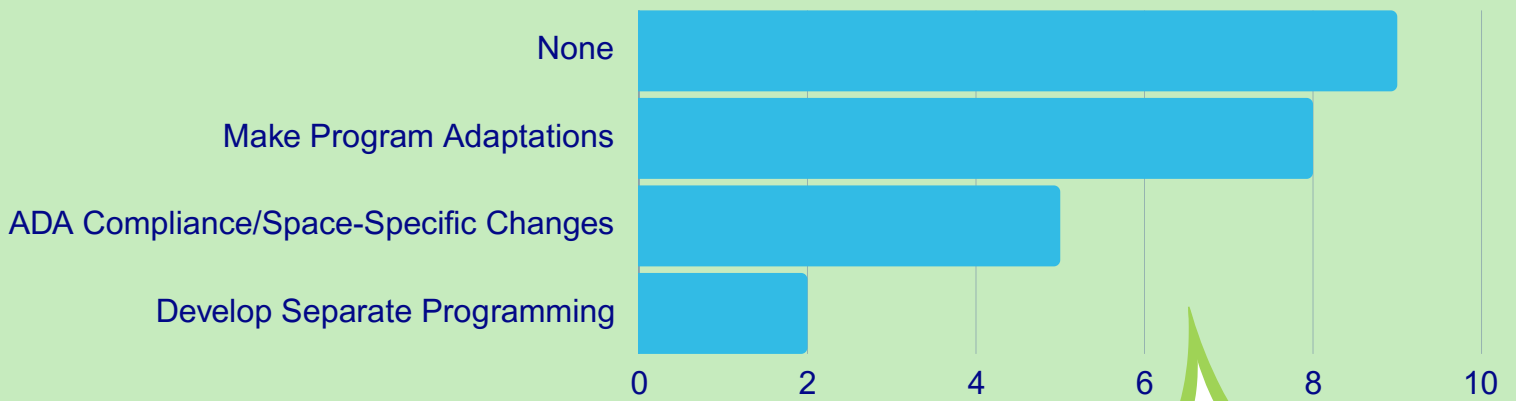
expanded services past arts and culture to meet community needs in the past four years



would be a significant loss to their community upon closure

INCLUSION + DISABILITY

WHAT MAJOR STEPS HAVE YOU TAKEN TO CENTER PEOPLE WITH DISABILITIES?

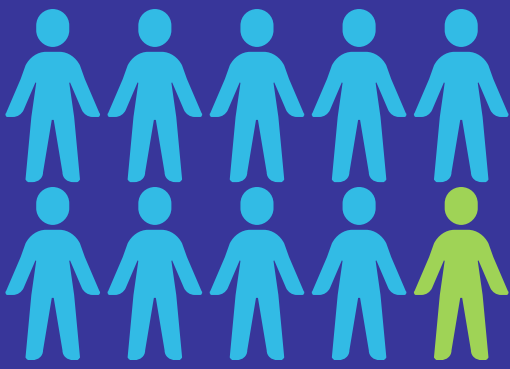


of all provider respondents stated they were ADA compliant

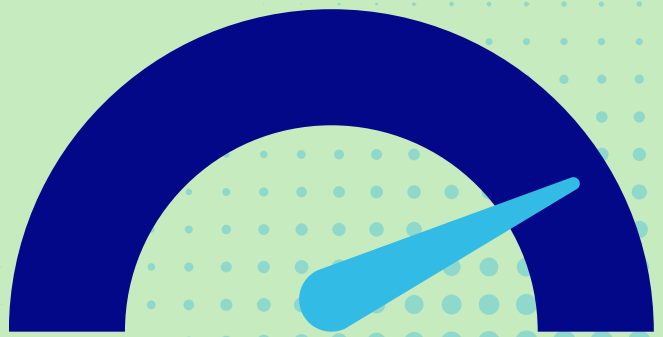
This data suggests a misunderstanding of what is needed for students who have disabilities.

TEACHER EXPERIENCE + CURRENT BARRIERS

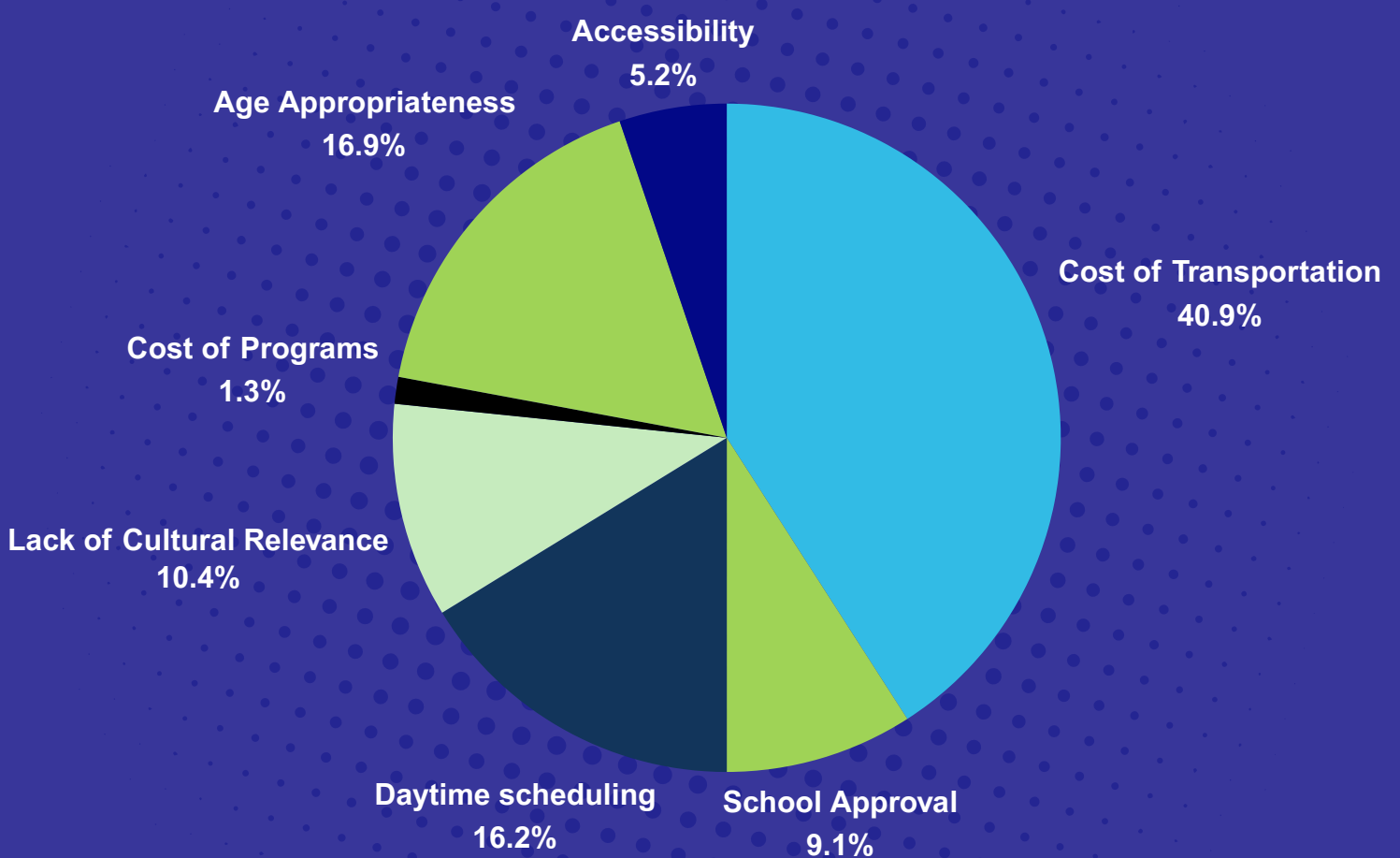
93 teachers were surveyed this year about their experience in DEIA and access



83% of teachers stated they could find culturally relevant programs for their students



WHAT PREVENTS YOUR ACCESS TO ARTS ED?



SOURCES

- DDi's SY22-23 Collective Impact Survey
- DC Arts and Humanities Education Collaborative Teacher Surveys

ADDITIONAL READING

- DDi's 2024 Annual Report
- OSSE's Data and Reports
- DC Policy Center's Education Policy Initiative
- Office of the Deputy Mayor's Edscape